



Lommy Eye XL (9L6)



Lommy Eye L (9L8)



Lommy Eye M (9L2)

[/lommy eye]

Technical Data Sheet

Lommy Eye, small, battery-driven 4G - GNSS tracking device. Smart and easy to use – no assembly or wires are required.

Lommy Eye provides a complete overview of all your assets, securing precise and effective handling. The combination of GNSS & 4G CatM1 with 2G fallback technology ensures optimal network connectivity and data collection.

Applications

- Asset tracking
- Monitor the location using accurate GNSS technology
- Motion sensor enables positioning if movement
- Small, suitable for assets of all sizes
- Advanced cellular triangulation, if no GNSS data available
- Active RFID technology enables indoor positioning
- Enable the RF beacon and track down with a Lommy Locator

Report interval

- Fixed time interval or pre-set custom times
- Movement reports, down to 15 minutes

Installation

- No assembly or wires

Please see **Quick Start Guide** for mounting instructions.

Features

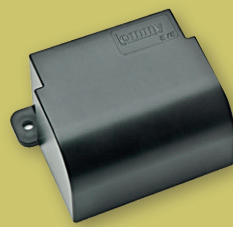
- Movement detection: 3 axis G-sensor
- RF beacon: 25 mW
- Manual Geofencing
- Accelerometer wake up
- Recovery mode
- Scheduler with time zones
- Tracking on stop / on move
- Backup Tracking with cellular triangulation
- Commands, configuration, and firmware update over air: API, Web Care4all
- Time Synchronization: GNSS, Server

The intelligent 4G + 2G technology

- Ensures optimal connection
- Primarily uses 4G if available
- Switches seamlessly to 2G in remote areas
- Connects quickly when changing networks
- Connects quickly when changing countries

Battery consumption is optimized

- As the primary 4G connection uses less battery
- As hardware connects faster to the network
- As the number of retries are greatly reduced



Lommy Eye XL (9L6)
Up to 6000 positions
IP68 - Waterproof



Lommy Eye L (9L8)
Up to 2400 positions
IP67



Lommy Eye M (9L2)
Up to 1200 positions
IP33

Positioning and communication

- FDD LTE Cat M1 bands B3/B8/B20
- GSM: Quad band 2G - 850/900/1800/1900 MHz
- GNSS: GPS, GLONASS, GALILEO, BEIDOU, QZSS
- SBAS: WAAS, EGNOS, MSAS, GAGAN
- Assisted GNSS
- 33 Tracking channels & 99 Acquisition channels & 210 PRN channels
- Tracking sensitivity: -166 dBm
- Data protocol: UDP, SMS

Interfaces

- RFID - 868 MHz
- Sensors: 3 axis G-sensor
- Internal memory: 2 MB flash
- Antennas, Internal:
 - GNSS
 - LTE/GSM
 - RF

Compliance

- CE, RoHS and WEE

Server and data security

- ISAE3402 certified (referring to ISO 27002)

Data visibility / platform

- www.trackeye.dk
- www.lommyfleet.com
- White Label
- System integration (API)

Physical:

	9L2 (Lommy Eye M)	9L8 (Lommy Eye L)	9L6 (Lommy Eye XL)
Weight	56 g	119 g	158 g
Measurement	55 x 52 x 12 mm	83 x 80 x 25 mm	80 x 54 x 37 mm
Protection	IP33	IP67	IP68
Number of positions	Up to 1200	Up to 2400	Up to 6000
Battery change	By user	By user	By service shop
Battery lifetime	Battery life is extended, and the number of positions is maximized when the device is used under appropriate operating conditions with a good network connectivity. Please see the Quick Start Guide for installation advice		
Power	Lithium metal batteries		
Temperature range	-20°C to +60°C		

For technical questions, please contact Flextrack Support:
support@flextrack.dk

www.flextrack.dk

Flextrack, Høgevej 19,
DK-6705 Esbjerg Ø, Denmark

[version 3.0]

