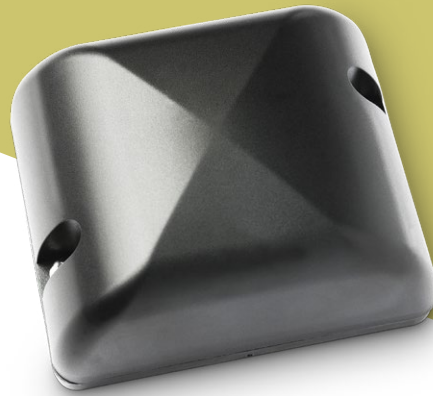


[//lommy asset]



Technical Data Sheet Lommy Asset 9B22

Lommy Asset, a small battery-powered GPS tracker, that monitors the location of all your valuables and keeps them safe.

Adjust the report interval from hours down to minutes, depending on your needs.

Features

- Monitor the location using accurate GPS technology
- Positioning with advanced GSM triangulation
- Enable the G-sensor and monitor the movements
- Fast positioning, if required
- Battery powered with efficient power management
- Small, suitable for assets of all sizes
- Remote management of settings and alerts
- Replaceable battery

Report interval

- Time interval adjustable, e.g. every 6, 12 or 24 hours or pre-set time
- Movement reports, adjustable, down to every 2 minutes

Installation

- No assembly or wires

Please see **Quick Start Guide** for mounting instructions.

Data visibility / platform

- www.trackeye.dk
- www.lommyfleet.com
- White Label
- System integration (API)

Specifications

Communication:

- GSM Quad band 2G - 850/900/1800/1900MHz
- Communication protocol: UDP
- Positioning: GPS and GSM triangulation
- Antennas: Internal
- Motion sensor: 3-axis G-sensor

Physical:

- Weight: 174g
- Measurement: 71x85x33mm
- Battery type: LiFePO4 (Lithium Ferro)
- Battery capacity: 10.800 mAh
- Battery lifetime: 3000 - 5000 positions (with a maximum 7 years due to cell discharge)
- Battery change: Replaceable
1,5V AA size battery
- Temp. range: -30°C to +60°C

Certifications

- CE, WEEE/RoHS

Server and data security:

- ISAE3402 certified (referring to ISO 27002)

For technical questions, please contact Flextrack Support:
support@flextrack.dk

www.flextrack.dk

Flextrack, Høgevej 19,
DK-6705 Esbjerg Ø, Denmark

[version 1.1]